



6 Gigha Quadrant

Wishaw, ML2 0TE

Offers Over £135,000



Upload Abode is delighted to present this impressive 3 bedroom semi-detached family home. This fantastic property is finished to a high standard throughout and benefits from well proportioned rooms, an open-plan dining room and kitchen.



Five things the current owners love about their home:

1. A good quiet area to live.
2. Great neighbours!
3. Handy for local amenities such as train station, sport centre, library, hospital etc.
4. Great Central location for transport to Glasgow, Edinburgh and Hamilton.
- 5 Close to golf courses, Strathclyde park and Clyde Valley.

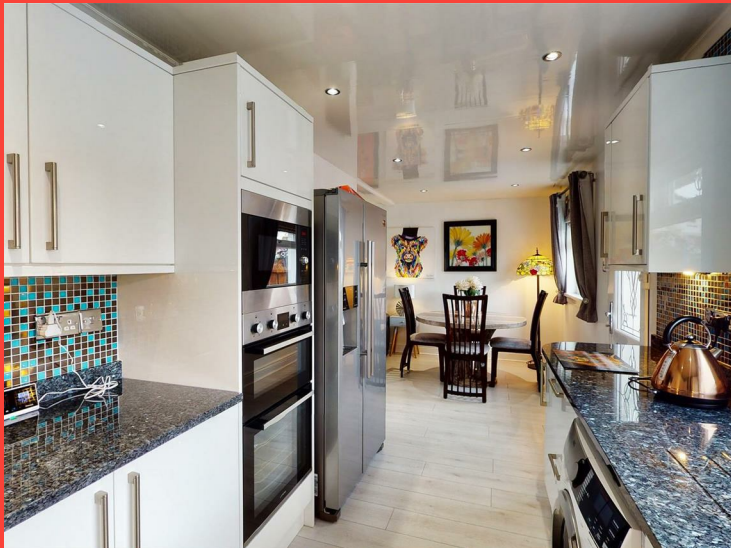
INTERIOR

Entrance to the property is via decorative glazed double doors leading to the entrance hall with striking feature staircase and glass balustrade.

Lounge:
Bright space with bay window, feature fireplace and light grey oak flooring that flows to the dining room and kitchen.

Kitchen/dining room :
This stunning kitchen boasts a sleek and modern finish. White high gloss units are complemented by a dark worktop and unique Mosaic tiled splashback. The open plan dining area provides plenty of space for formal dining.

Bedroom/Utility:
Located on the ground floor with under stair storage, this room is currently used as a utility room but could be utilised as a third bedroom.



These particulars, whilst believed to be accurate are set out as a general outline only for guidance and do not constitute any part of an offer or contract. Intending purchasers should not rely on them as statements of representation of fact, but must satisfy themselves by inspection or otherwise as to their accuracy. No person in this firm's employment has the authority to make or give any representation or warranty in respect of the property.



Bedroom 2:
Large double bedroom with Velux window and built-in double wardrobes.

Bedroom 3:
Double bedroom with built-in double wardrobes and views to the rear of the property.

Shower Room:
Contemporary shower room with under sink built in storage and located on the ground floor.

EXTERIOR

The front of the property boasts a well-maintained lawn with a driveway to the side.

The back garden is low maintenance with monoblocked paved patio, raised deck and fencing to the perimeter.

Why choose Upload Abode to sell your home in Wishaw

Reputation - We have acquired a fantastic reputation as a trustworthy and honest estate agent and are the most recent winners of Scotland's Estate Agent of The Year at the Herald Property Awards. We pride ourselves on our excellent customer service and have 100's of 5 star reviews.

Innovation - We offer a cutting edge and dynamic approach to marketing your home with professional photography, innovative 3D Virtual Tours and Social Media advertising all helping your property stand out online.

Cost - We are a fixed fee estate agent, offering a fair pricing structure with fantastic value for money.

These particulars, whilst believed to be accurate are set out as a general outline only for guidance and do not constitute any part of an offer or contract. Intending purchasers should not rely on them as statements of representation of fact, but must satisfy themselves by inspection or otherwise as to their accuracy. No person in this firm's employment has the authority to make or give any representation or warranty in respect of the property.

Maxim 1 2 Parklands Avenue, Motherwell, ML1 4WQ
Tel: 01698 420884 Email: office@uploadabode.co.uk www.uploadabode.co.uk



These particulars, whilst believed to be accurate are set out as a general outline only for guidance and do not constitute any part of an offer or contract. Intending purchasers should not rely on them as statements of representation of fact, but must satisfy themselves by inspection or otherwise as to their accuracy. No person in this firm's employment has the authority to make or give any representation or warranty in respect of the property.

Maxim 1 2 Parklands Avenue, Motherwell, ML1 4WQ
Tel: 01698 420884 Email: office@uploadabode.co.uk www.uploadabode.co.uk